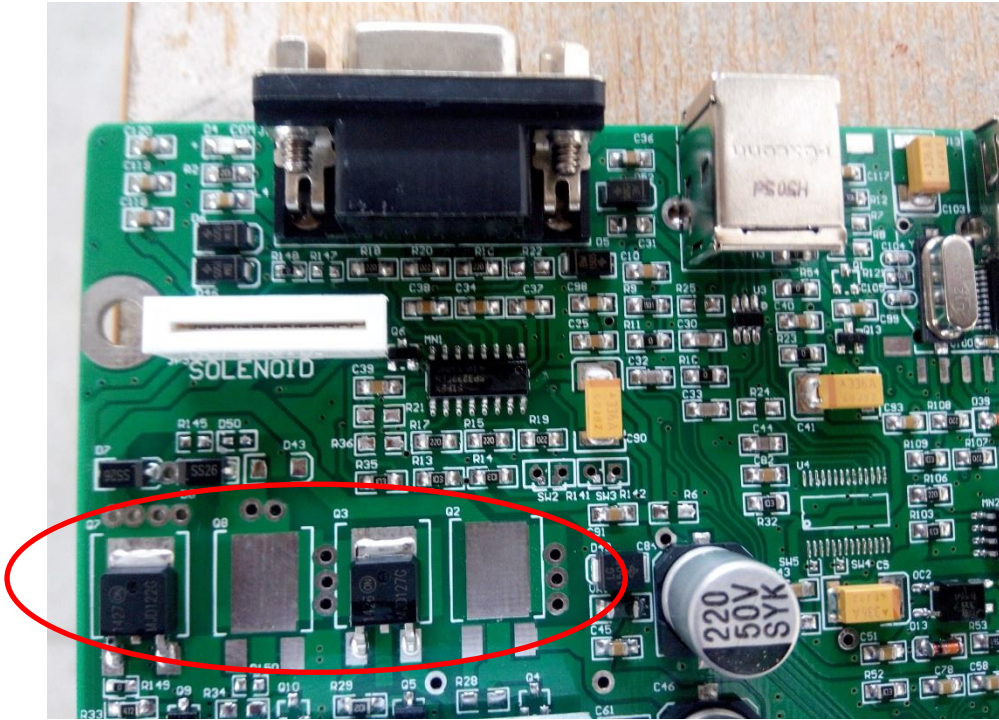
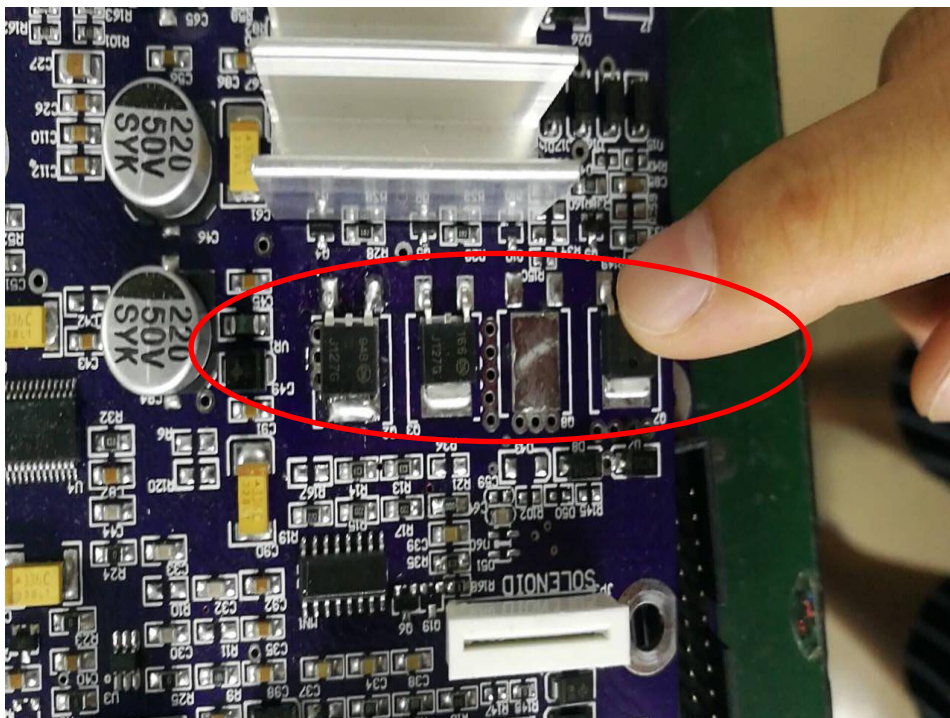


# HOW TO DISTINGUISH BETWEEN MOTHERBOARDS USING DIFFERENT CHIP SEQUENCES

V-SMART Motherboard, SKU: V3-MB

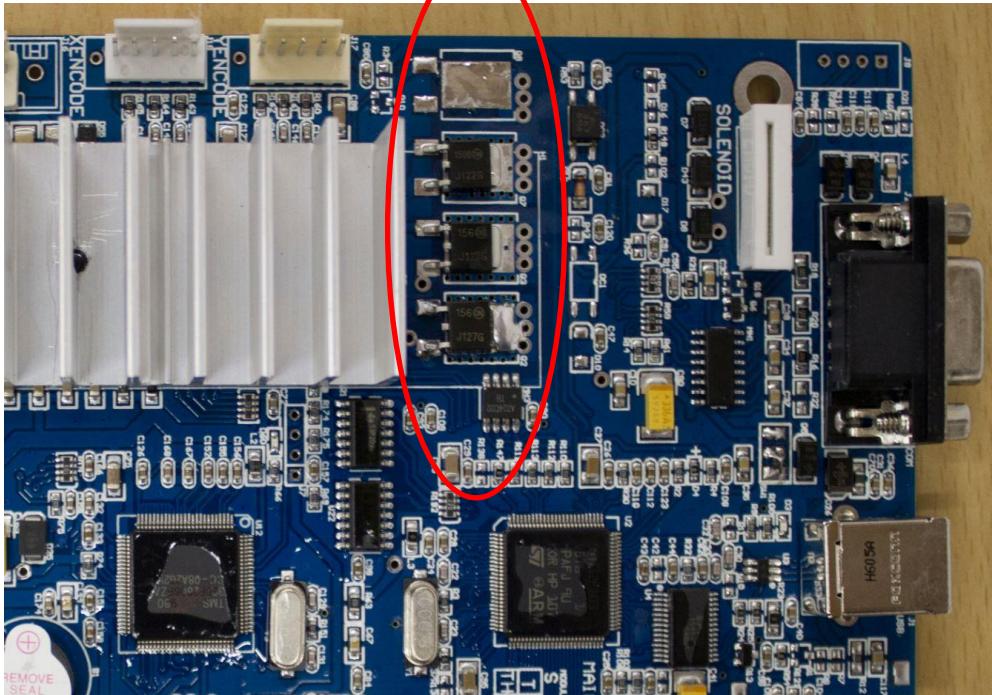


V-SMART PLUS Motherboard, SKU: V3-MB/P



(please note, for new stock, no chip difference for V-Smart and V-Smart=)

**V-AUTO Motherboard, SKU: V6-MB**

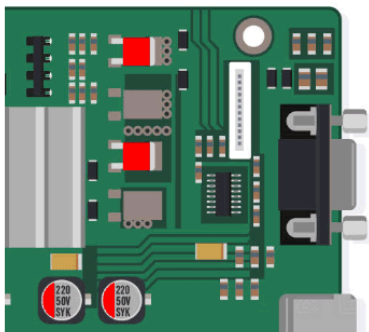
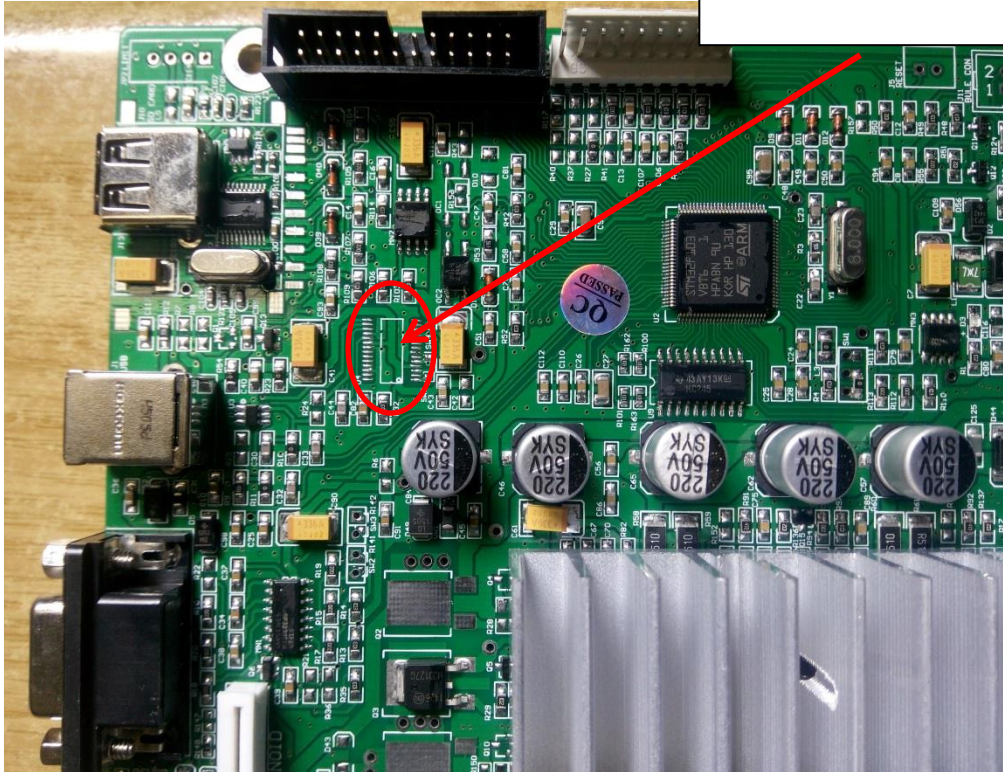


**V-AUTO Label Cutter Motherboard**

(TBA)

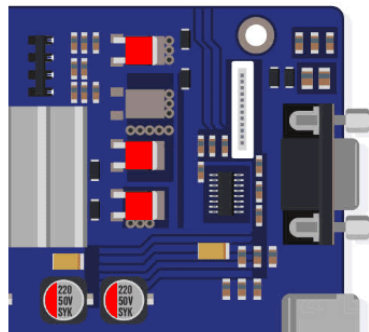
## USB 2.0 / FTDI (USB TO SERIAL)

The presence of a chip here denotes the motherboard using USB to Serial Connection (FTDI), otherwise USB 2.0



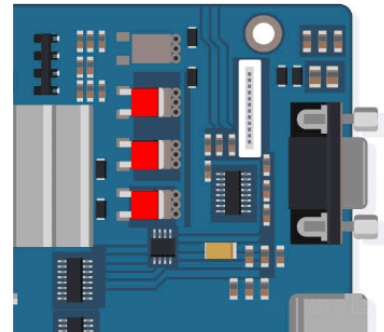
**SKU: V3-MB**

AM.CO.ZA V-Smart Vinyl Cutter  
Motherboard



**SKU: V3-MB/P**

AM.CO.ZA V-Smart Plus Vinyl Cutter  
Motherboard



**SKU: V6-MB**

AM.CO.ZA V-Auto Vinyl Cutter  
Motherboard