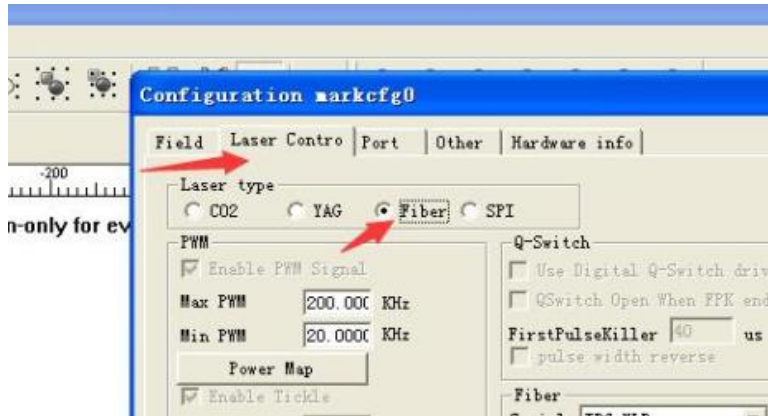
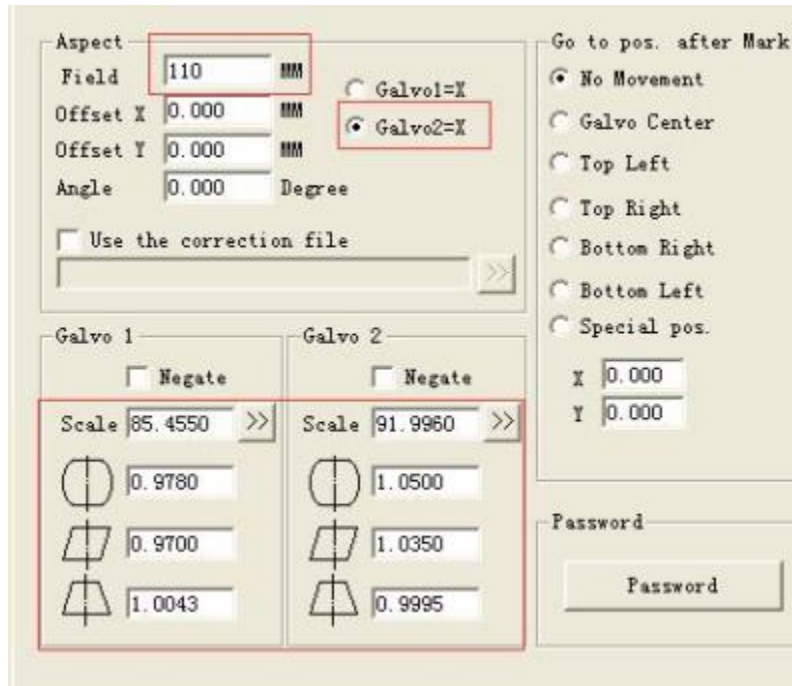


## Parameter Setting:

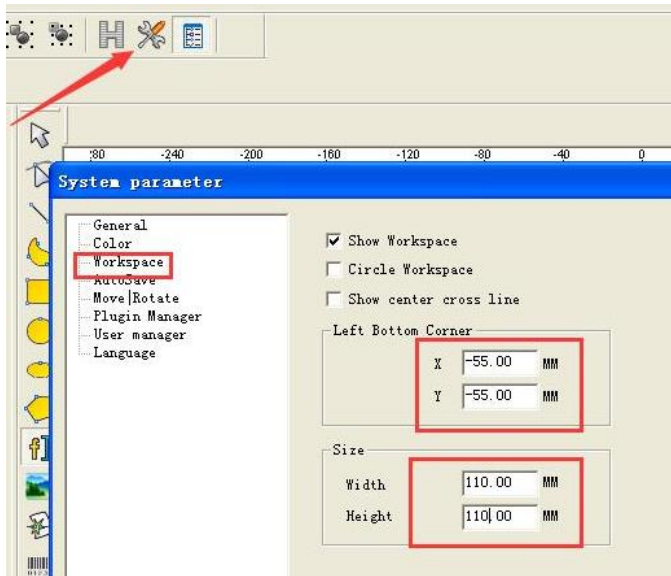
1. Click F3, Laser Control, Choose Fiber



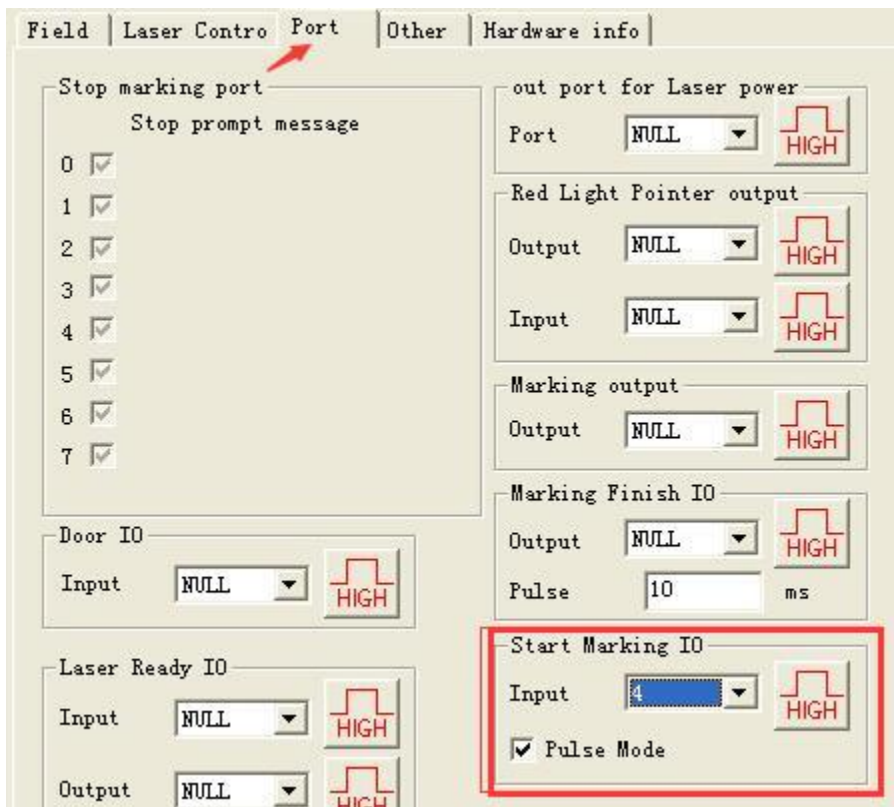
2. Field : 110X110mm Galvo 2=X



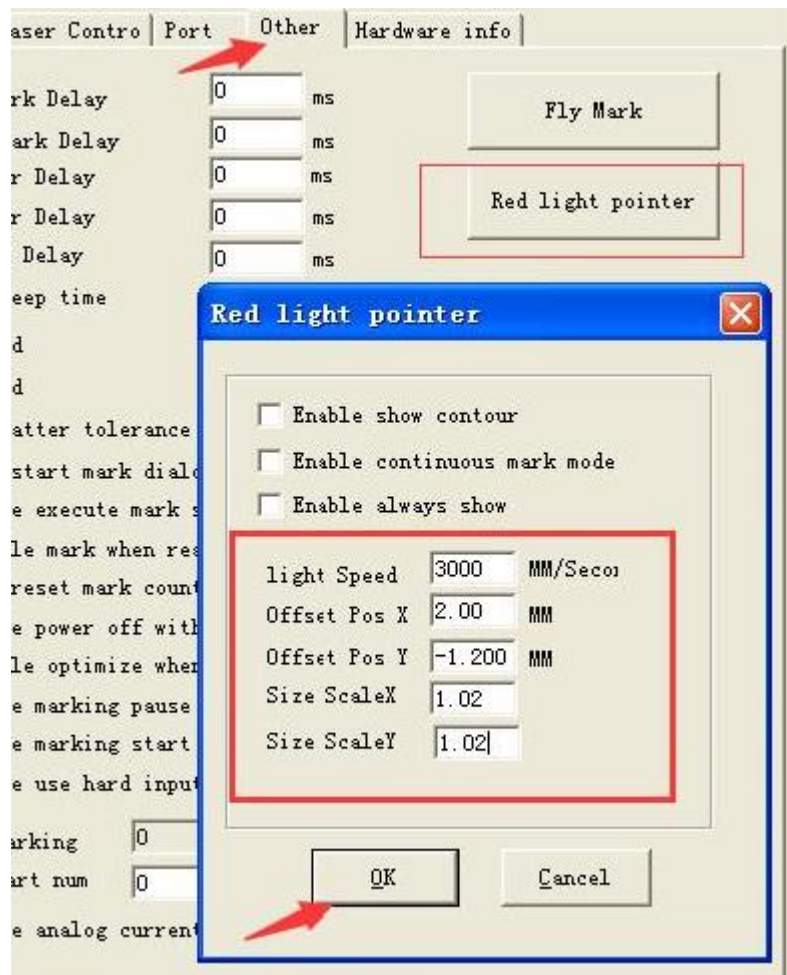
3. Work Space: Click the below tool, change work space as below:



**4. Foot Switch Setting: Click F3, Port, Start Marking ID: input 4**

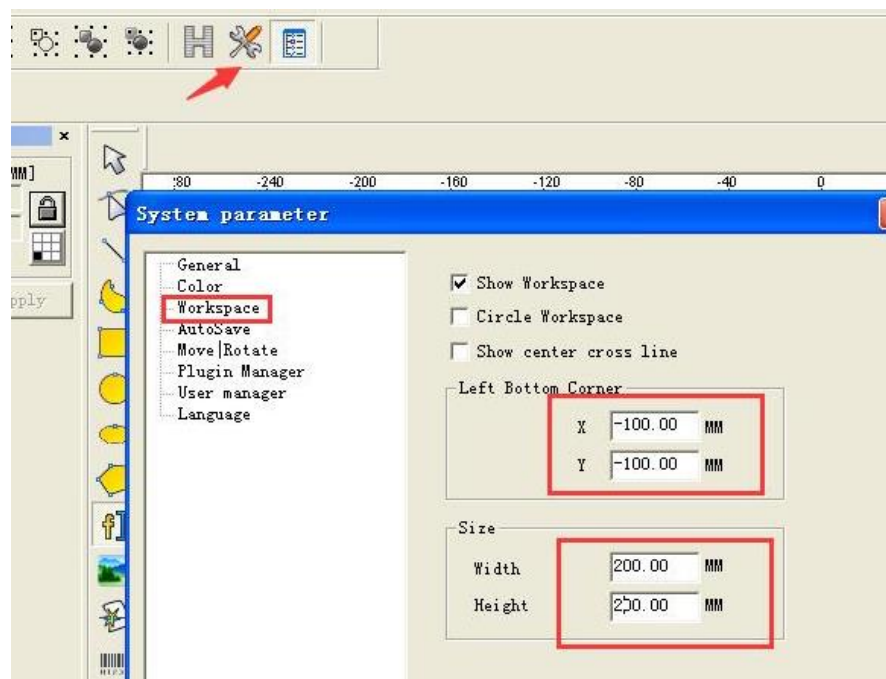


**5. Red Pointer Setting:**



## 6. 200X200mm Field Lens Parameter:

Work space:



Size setting:

Field | Laser Control | Port | Other | Hardware info

Aspect  
Field  MM  
Offset X  MM  
Offset Y  MM  
Angle  Degree

Galvo1=X  
 Galvo2=X

Use the correction file  
 >>

Go to pos. after Mark  
 No Movement  
 Galvo Center  
 Top Left  
 Top Right  
 Bottom Right  
 Bottom Left  
 Special pos.

X   
Y

Galvo 1  Negate  
Scale  >>

Galvo 2  Negate  
Scale  >>

Password