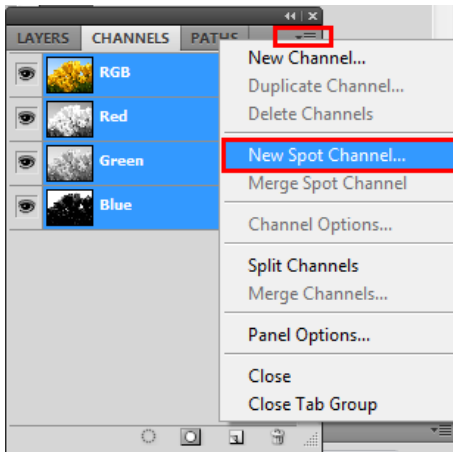


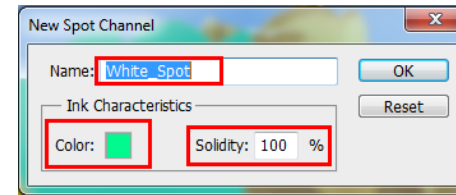
- 1 Open the Photoshop and use the marquee or quick selection tools create the selection that you want to made the white spot.



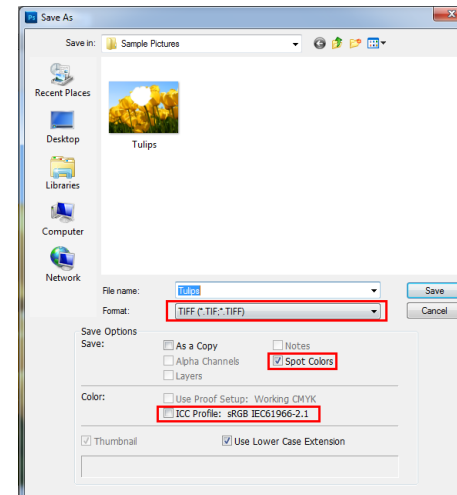
- 2 Create a new spot channel.



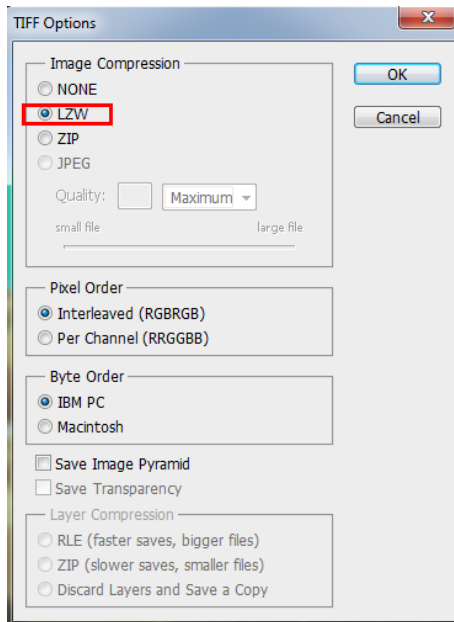
- 3 Set the spot name and ink characteristics.



- 4 Save as TIFF format.



# PhotoPRINT: Made the spot white in Photoshop



Tips: 1、 Save option: Let the “spot color” checked.

Color: Let the “ICC profiles” unchecked.

2、 TIFF options: Use the LZW compression.

## 5 Add the TIFF file to the PhotoPRINT.

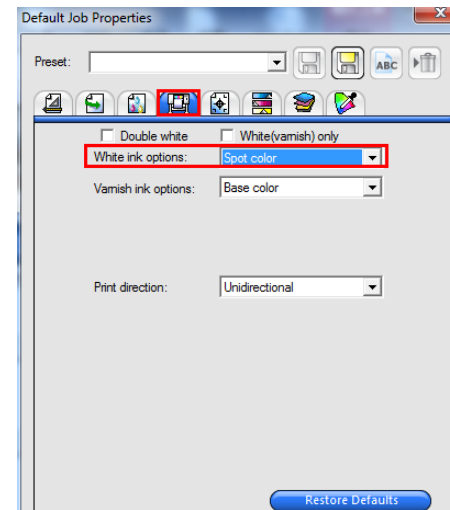
Tips: The PhotoPRINT must have the TIFF spot channel

option password and opened this fuction.

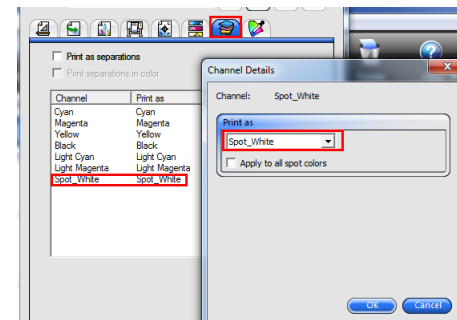
If not, the software can’t read the spot channel.

## 6 Set “Job properties-Printer options”

Set the White options as spot white.



## 7 Set “Job properties-Separations”



Set the spot channel print as spot white.

Tip: Double click the channel can appear the dialog.